

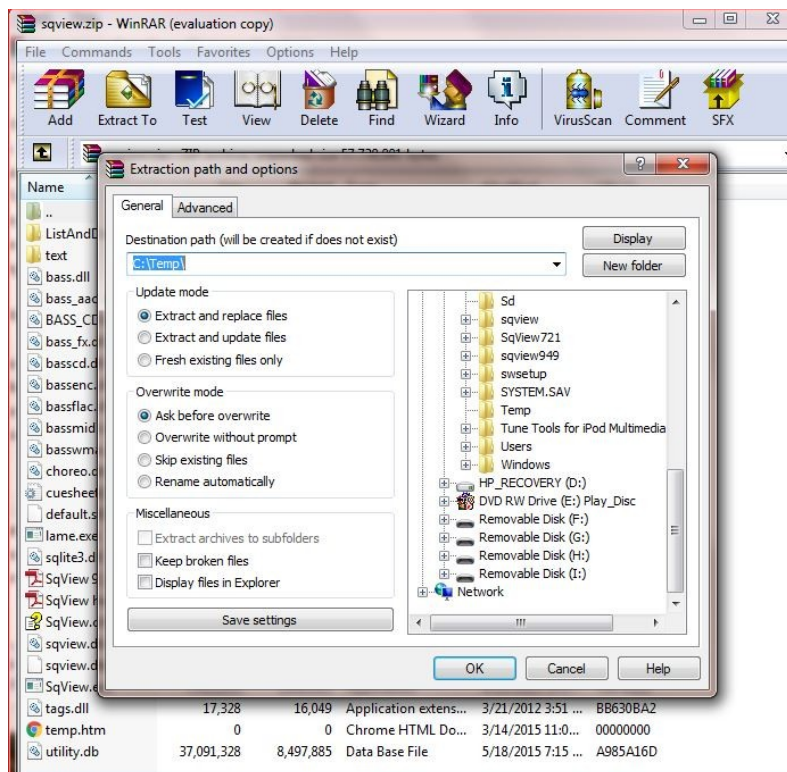
## SqView PC Install and Use

In the chapter about Digital Music, a number of programs were discussed briefly. I will leave Vic's program to Vic and PCDJ FX to those that use it. I will be focusing on the installation and setup of SqView ver. 9.11.3, for the novice users, as well as some of the more advanced features I use and have been ask about many times over the last few years. So far, ALL of the 9.xx.x series the options and settings discussed here have changed little. Therefore, if you are using a newer version than some of this may have changed.

Before you get started and or download SqView, if you are new to SqView, read the FAQ section on the SqView site. It is a good place to start in answering questions about SqView.

I suggest you download SqView to a "temp" directory. Once you have downloaded SqView in to the "Temp" directory, you will need to **unzip** it. For those that are using SqView for the first time, **USE** the default directory setting, "C:\sqview." You may have to type this into the "Where do you want to unzip" text box. **NOTE:** if you have an older version of SqView, I recommended that you create a new directory for the newer version. Once you do that, you can then "import" all your settings from a previous version to the new one **before** you delete or erase the old version. Also in FAQ there is a "Q" and "A" about losing your setting from a previous version. Go there and follow those instructions.

**Unzip/Extract** the files to a new directory called SqView as part of the directory name (what I did is add the version number). This will help you in preventing writing over a previous version of SqView.



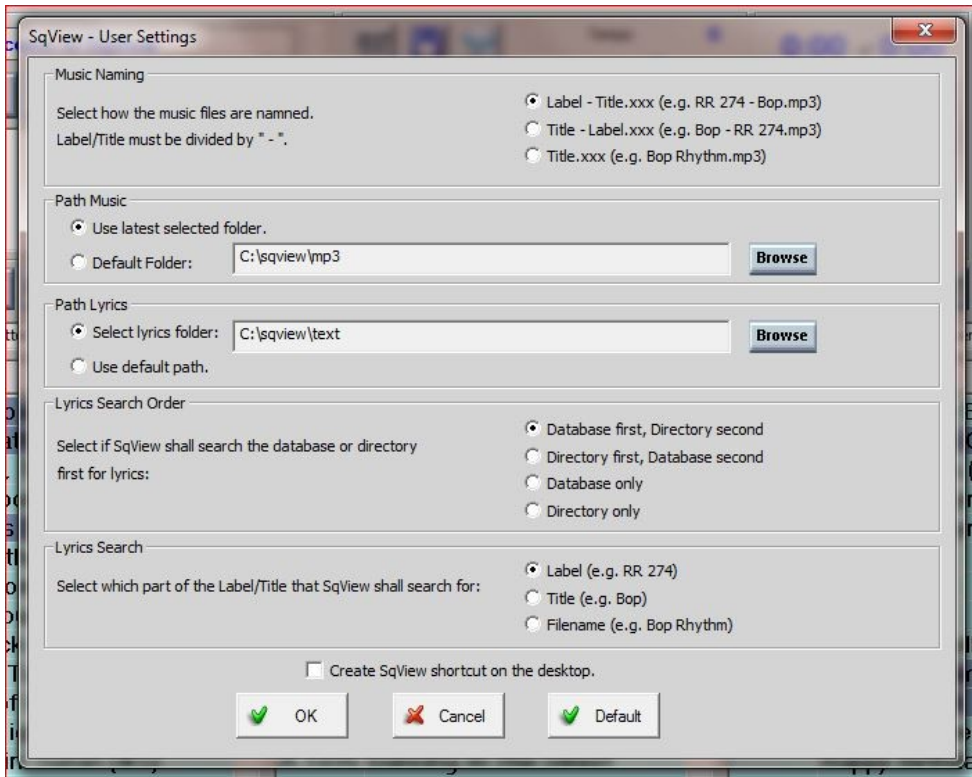
Unzipping SqView

Run the SqView App (the exe file) in the directory. If you are a user already, complete the "User Settings" Screen info and then you can skip the initial setup info and go on to "**Menu Bar; Options, Music.**"

A "User Settings" Screen appears

Look at **Path Music** and **Path Lyrics**

**Path Music:** change that path to where your music is already stored or create that path from Windows explorer.



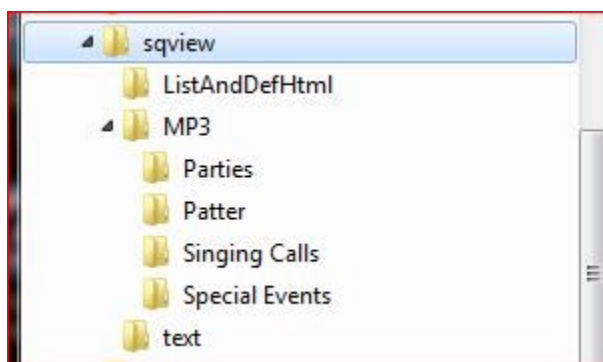
User Settings

After you have completed the "User Settings", minimize SqView and open Windows Explorer.

In Windows EXPLORER:

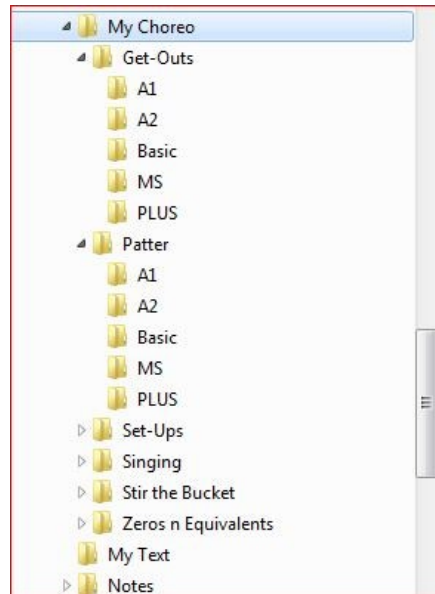
Create two separate directory folders in MP3 directory and name one "patter" the other "singers". (Separating your music works well in searching for tunes.)

You can create a "party" and or "special occasion" directory folder for those special Music files.



MP3 Directory Structure

If you **create** or **have** your own choreography, you may want to create separate folders in a Dir called "My Choreo". Then make other Dir's for the levels, Basic thru Challenge or whatever level you call thru.



**My Choreo Directory Structure**

After you have done the above instructions in Windows Explorer, explore/view, read thru the SqViews' Help file. A lot of good information about generic settings and the use of the all the features of SqView are there. All of the Menu Options, Tabs and buttons will be explained.

However, here are a few points you really need to be familiar with, and recommended settings I use, before we get into some of the more advanced features.

#### In The **Music Tab**:

Left column (1/3) of application

Middle series of buttons above the column list of patter music, is a button with a Folder & Musical Note; this will let you set your path for the patter.

Same line Button with **Magnifying Glass** on it, use this in searching for specific titles of hoedown/patter music.

The last button in the line, yellow with red slash, this is to turn "lyric's" **on or off**, leave it off.

Middle and last columns

Button with Folder and Musical note, again use this setting for your path to your "singing call" music, any party or special occasion music.

Last button in the line "yellow with red slash," that is to turn song lyrics on or off, **TURN this ON**.

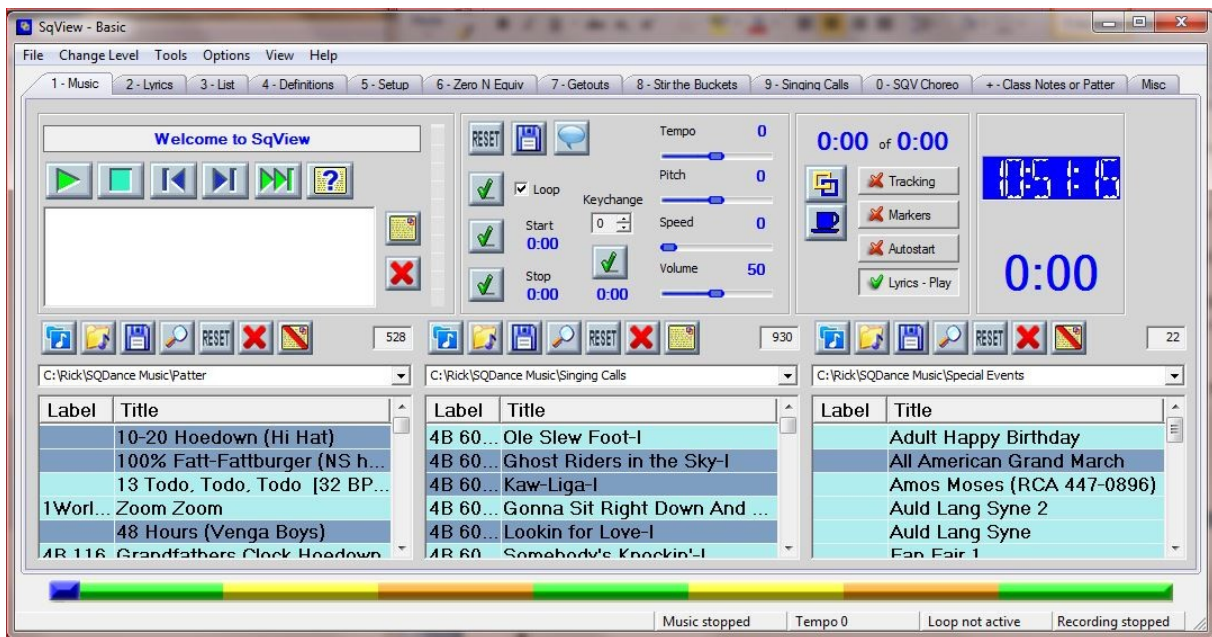
The red slash will disappear.

NOTE: if you use the third column for special events music like Grand March or Happy Birthday, then **turn on** the red slash to prevent SqView from searching for lyrics. Line Dances you may want to see the Lyrics/steps to cue.

Now look in the right most corner (next to the clock). A button labeled "**Lyrics – Play**", **TURN this ON**.

Last, but not least; look at the upper portion where "**Tempo**", "**Pitch**", etc., are located. Be sure to check the "**LOOP**" toggle, that is used for you patter, column #1

The rest of the items/controls on the Music Tab are explained in the Help file.



**Music Tab**

Now for some advanced settings that will make life easier for you...

From the Menu Bar; **Options, Music;**

All these options are true/false (on/off) options, and a couple of directory pointers.

**Global –**

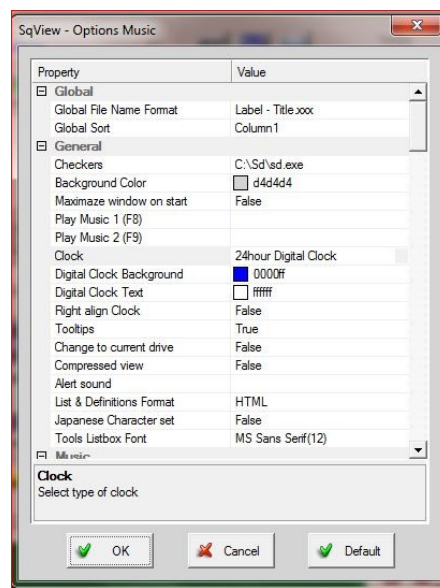
Nothing changes

**General –**

Decide on your clock settings

“Alert” sound, use default or point to a directory that has some kind of sound effects.

Tools Listbox font – keep the default or in large it if you cannot see small print.



**Global and General Options**

### Music –

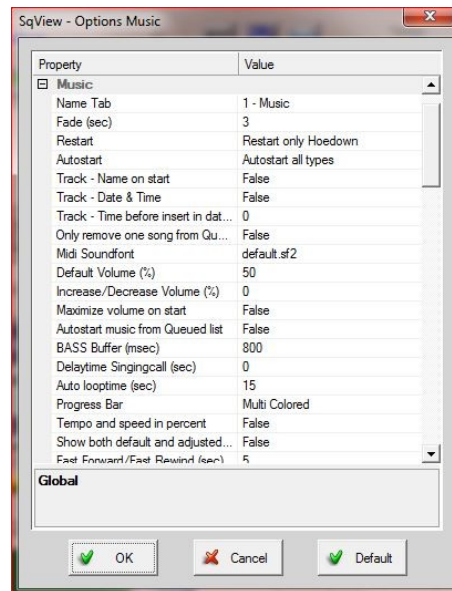
Turn your default volume **percentage** down to at least 75%, keeping it at 100% “over-drives” the amplifier and distorts the music, use your amp to bring up the music volume to the desired level.

Maximize Volume on start - FALSE

### Progress Bar –

Go multicolored, it will give you a quick idea what section of music you are in, sequence, break, etc.

Number of loops - # of times the patten will play before ending, for classes I put it at 3 for Patter, Dances 2.

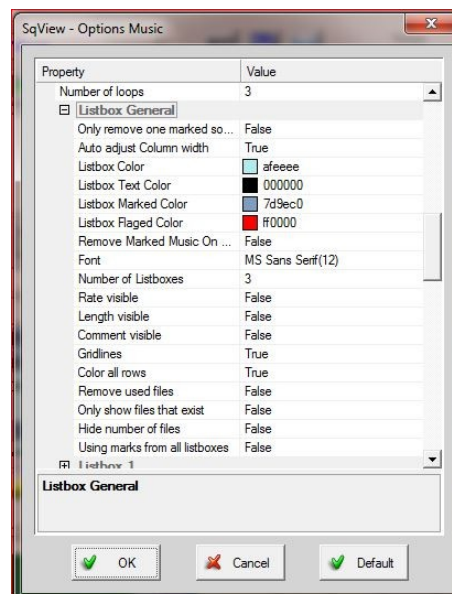


Music and Progress Bar

### Listbox General –

You can experiment with your colors if you want.

Font – I would change this so you can read the titles in your list box columns.



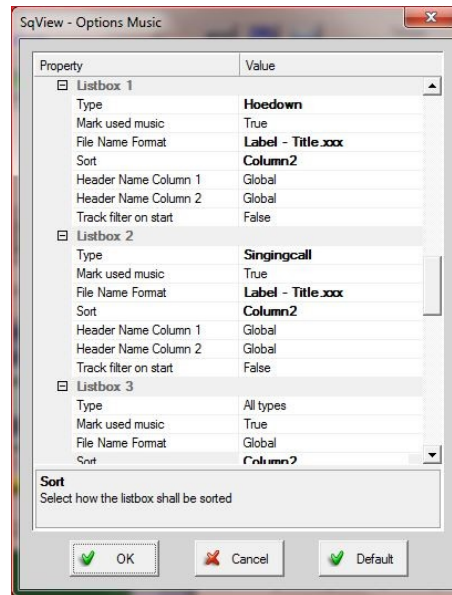
Listbox General

### List Boxes 1, 2, 3

File Name Format – “Label – Title.xxx”

Sort – “Column2”

Type – here you want the left most column (Listbox 1) as Hoedown, Middle column (Listbox 2) Singing call; and third column (Listbox 3) All Types



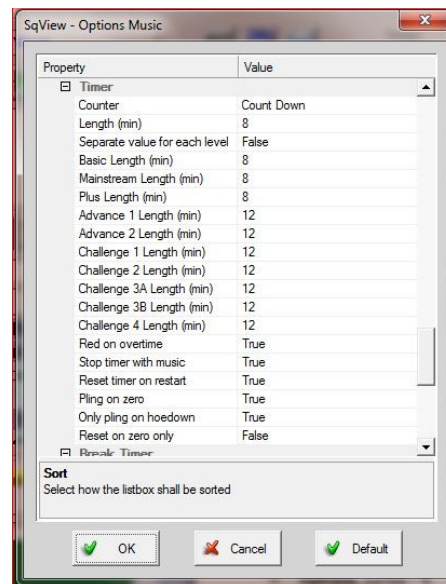
List boxes 1, 2, 3

### Timer –

Counter – Count down

Basic, Mainstream, Plus – All 8 minutes

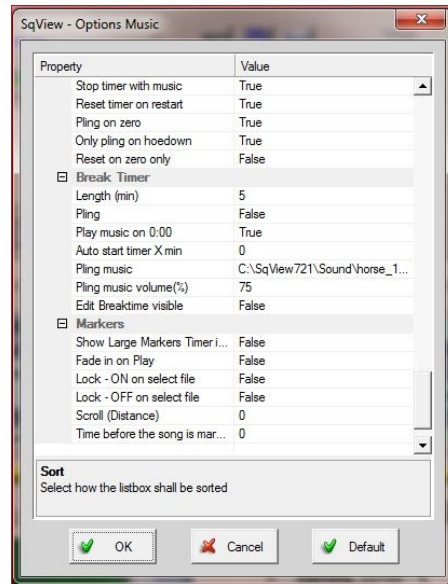
Advance and Challenge – All 12 minutes



Timer Options

### **Break Timer –**

You can adjust those to your liking



**Break Timer Options**

### **Markers –**

Up to you, I leave mine alone.

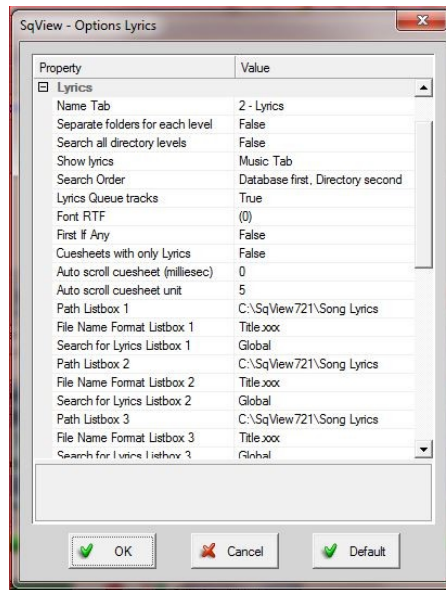
### **Options, Lyrics –**

Again, all these options are true/false (on/off) options, and a couple directory pointers. The only one I would change would be the Search Order. If you write some of your own lyrics, then use "Directory" first, then "Database" second option.

Path Listbox 1, 2, 3 – Should be default to "c:\sqview\text" OR the directory that has your music cue sheets. If you use Listbox 3 for line dances then you need to set that pointer to the directory that has you cue sheets for the line dances.

File Name Format Listbox 1, 2, 3 – Should be **Title.xxx**.

Stylesheets – leave as is or you can experiment with how you want to see your cue sheets appear on screen by changing colors.

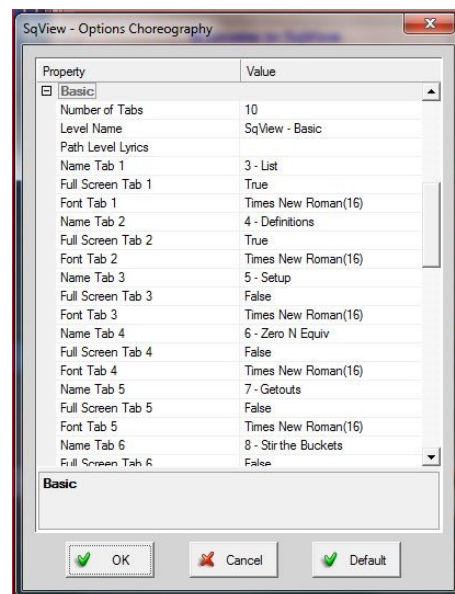
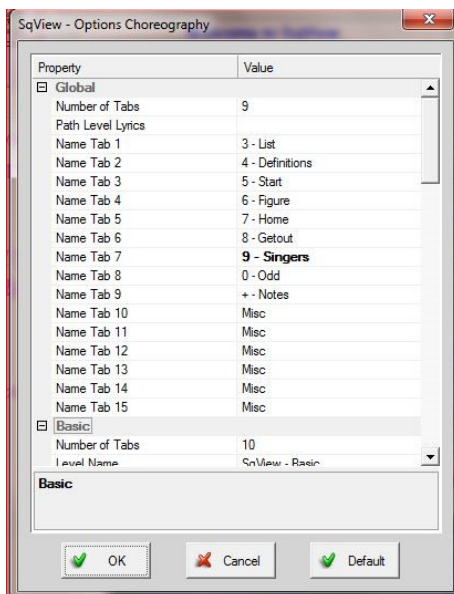


Lyrics Options

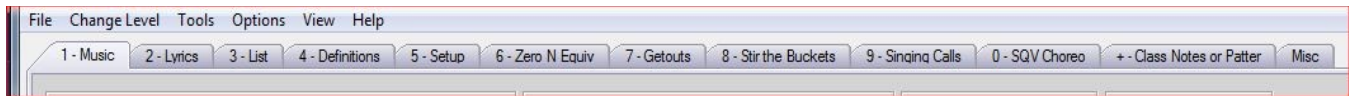
### Options, Choreography - (Global)-

If you write your own Choreography/Patter, i.e. Setups, Get-out's, Zero's n Equivalents, Class notes, etc., then here is where you want to change many property values. You can set your tab, number of tabs, tab titles, and fonts to any of the special patter or lyrics you write to songs for teaching or dances.

This may be a little confusing, but I will try my best to explain. On the main SqView application Tab 1 (Music) or Tab 2 (Lyrics) ARE NOT CHANGEABLE, however you see that in these options "Name Tab 1" (Tabs 1 thru 15) are. **WARNING:** the first 2 tabs that you can change are Tabs 1 and 2, are your Callerlab List (3) AND Definitions (4) for each level, and are marked as such, **LEAVE THESE ALONE.** You can start changing Tab 3 (value 5). Below are screen prints of just the Global and Basic Property and Values. These values will change how SqView Tabs overall look and feel.







### Choreo Options and Tab Results

One other tab I would leave alone and that is the Zero (0) tab. The older versions of SqView used this tab for choreography that [Thomas Bernhed](#) created to go with the original program. **IT DOSE NOT COPY OVER TO THE UPDATED VERSION**, you need to use your directory button to set pointers to a DIR called "choreo" in the old version or "**cut and paste**" the directory in the newer versions of SqViews' directory structure, then set the pointers.

#### **Options, Hotkeys –**

I do not change any of these settings.

#### **Options, Output Device –**

This you may need to change if you use an external soundcard to play your music thru. Select the appropriate one.

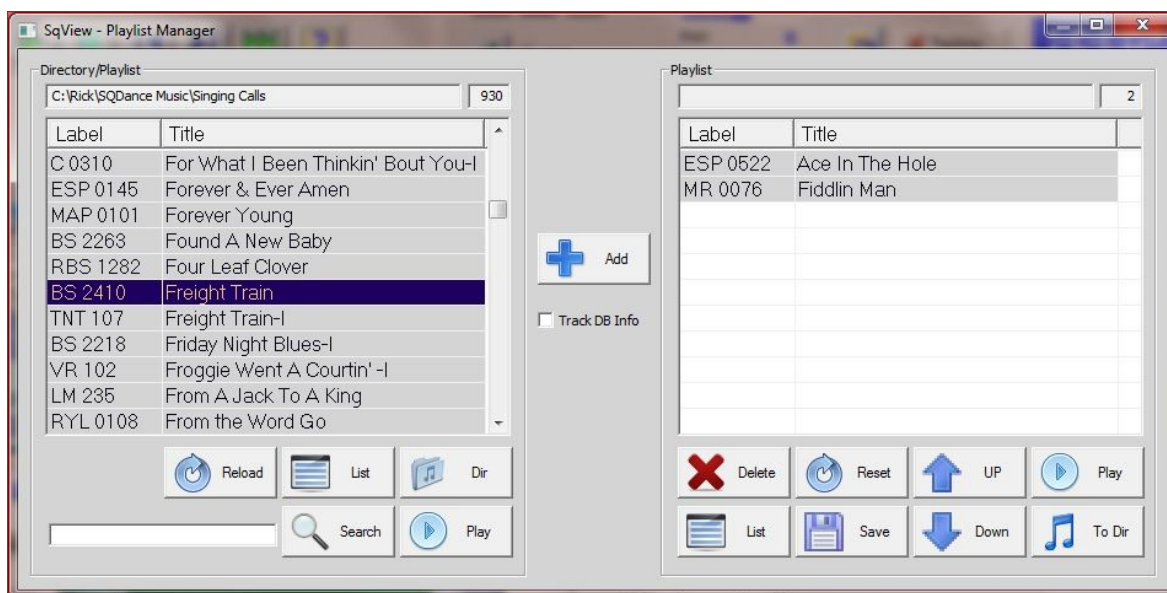
#### **Options, Fixed BPM –**

Change only if you want to, it is defaulted to 127 bpm.

The **Tools and View** Menu options are self-explanatory and you can explore them yourself. I do want to point out another couple of options.

#### **Tools, Playlist Manager –**

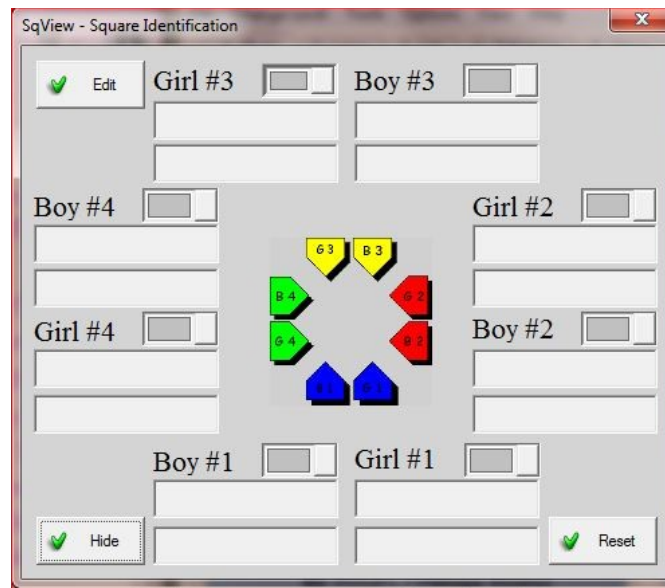
In the Play List Manager screen, you can add music to create "play lists" for dances or group theme music together like Luau music or Halloween music, etc. It is easy to use. Add the music from the left column to the right column, Name and save this Playlist. NOTE: I would save these playlist in your music directory either "patter" or "singers".



Playlist Screen

**View, Square Identification -**

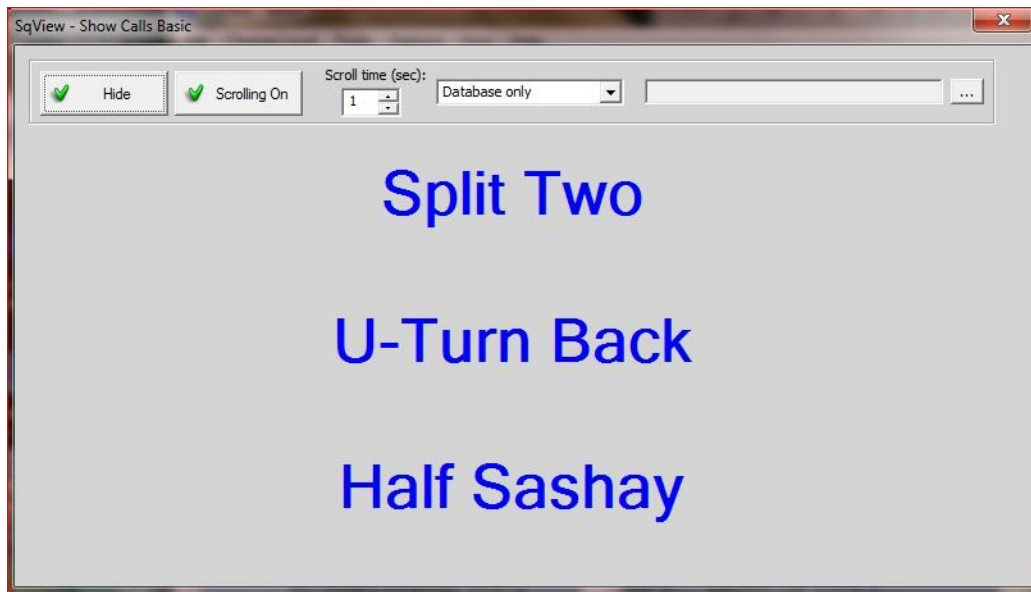
Helps you keep track of pilot square dancers.



**Square Identification**

**View, Show calls –**

Some of the Advance callers in class may remember this as "Flash Cards." I use it from time to time at the different levels just to move the dancers around the floor. It is fun and if you are mentoring another caller, it helps train him or her with formation-to-formation calling.



**Show Calls**

## View, Computer Cards –

Used for rotating dancer in and out (a lot for Advance Dances or Challenge Dances) for tips if you do not have enough dancers to fill a square. A “helper” to the caller in keeping track what tip it is.



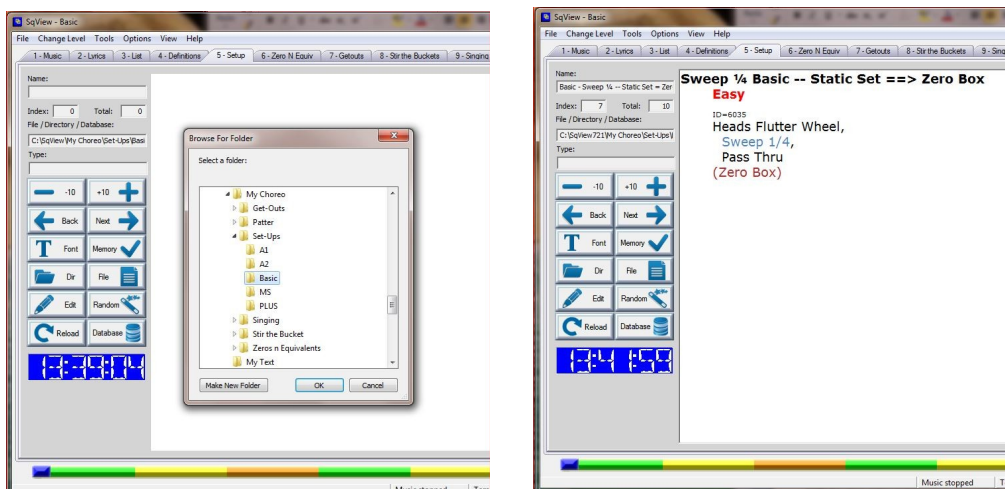
Computer Cards

## Using your own Choreography in SqView

Now, we need to get to the tedious work. Remember all those Property Value settings; you did a few minutes ago for your choreography? Here is where the real work begins but it is worth it in the end. Look at the tabs across the top of your screen; Not the Music, Not the Lyrics, Etc., but the brand new one you created.... (I will call mine Tab #5 – Setups). Click on that new tab.

On the left side of that screen, you have two columns of buttons; look for the Dir button. Click there and scroll through your directory to where you have stored all your “choreo” (hint – that “My Choreo” directory structure you created earlier) for Basic 1 thru 68. Choose that directory. **Voilà!** There is all your material... FYI, it should be in RTF (Rich Text Format), HTML single Web page, or PDF formats to be used/read here. **You MUST go through each tab at each level for these changes to take effect.** A lot of work, **YES!** It will be a godsend later on.

Let me give you an example: you are at a dance and the club president comes up to you and says, “Do you have your equipment with you? Our caller is delayed, can you start the dance?” It just happens to be a Plus level dance! Wow, you just happen to have written some material at that level recently and can go thru all those tabs and have material to call. (Similar situations happen to me and thank goodness, I had material written to call. It just happened to be A1.)



Choreo Basics Setups Tab Example

Remember you need to do this for each tab and each level you call or teach to use you material.

I hope that I have explained the main settings that most of you will be using and how I have set up my own copy of the SqView PC program for my choreography and usage. Remember, its primary use is for callers to keep their music organized and for calling dances. You **can** use this program for teaching with a little fine-tuning of your TABS for class notes and teaching material.

## SqView for MAC

### Q: Can SqView run on a Mac?

A: SqView is a PC-program, but Apple does have a solution that is called Boot-Camp to run PC-programs also. That will give the user a choice of which operating system to start when the computer is turned on. You can also run a Virtual machine with parallel desktops and have both operating systems started. ©

This was taken right from SqView Website. FYI: Thomas does not plan on having a version for Mac, at all. The source code for Apple is copyrighted and he does not wish to pay for that type of licensing. This would lead to charging ALL users because it would be unfair to charge “just Apple Mac users” for that version of SqView.

## SqView for Androids

First off, my SqView Android on my phone is only for back up in case my laptop crashes during a dance or class or even for a guest tip, on occasion. I am not saying you **can't** use it all the time, it is an individual choice. If you do not want to carry a laptop around, then it is great to have this option ready. I know a few callers that use SqView Android 100% of the time presently. You still have to keep updating the music and lyrics just like the PC version BUT you lose your phone when you are doing this because you would most likely have turn your phone off to update the music and lyrics files. **NOTE: if you plan on using SqView on your phone 100% of the time, be sure to put phone on “Airplane mode” prior to the class or dance.**

Second, all the instructions you will need for the android version for install and use are on the website, but I will go over a few tweaks and adjustments that I had to make for getting the application to work for me.

For Android version, use your phone and access the SqView website and choose the third button down **“Android”**. Use that link to the Google Play Store and download and install the application to your phone.

Next, copy all your music files and any lyrics files to your phone, preferably the **“SD card”**. I do/would use separate directories on the phone just like setting it up for your PC for separate directories of patter and/or songs. I took my SD card out of the phone to do this same sequence; it was faster than having the phone plugged in to the laptop thru the USB connection.

Now let's get started...

I will start with the "**Options Menu**" first, because that is as good as any..... To find **Options**, look for the 3 dots on the upper right hand corner of SqView.

**1. Options:**

Most of these are self-explanatory on/off switches either "checked" or not. I will explain two options you really need to consider.

**File Name Format**

Same as original SqView, choose the one you for your music Directory, either **Label** or **Title**. I, personally, use Label because my music is label first. IF you want your music alphabetical, you need to convert all those files, putting the label behind the title. To do this, use a free downloadable application called "**Nameconverter.exe**".

**Search for Label or Title**

I have found that these two must match or you will have problems finding your music.

**2. Database:**

See Website for description

**3. Small/Large Layout:**

See Website for description

**4. Help:**

See Website for description

**5. Path to external drive (SDCard):**

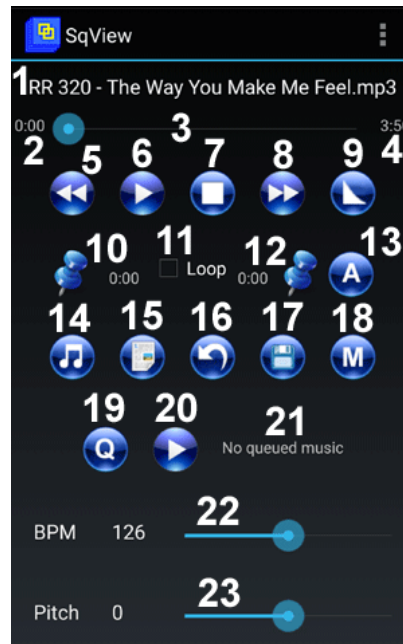
This is the path to your Sdcard where you have stored your music.

Example: `///sdcard/My Music/`

**NOTE: you must have three /// at the beginning of the path.**

Here, I would make two separate directories; one for patten and one for songs. You will need to do this from your computer and move all your music there, first. If you put all your music into one directory it might be confusing.

Now for the Main SqView Android screen. Look to the website for explanation of all the buttons here. I will explain the ones I used to set it up for my use.



SqView for Android Main Window

### **Select Music:**

There are two ways to select your music, Item #14 and Item #19.

Select Item 14 “Select Music” (musical note)

The music selection window is divided in 3 parts:

- **Music:** Displays **ALL** music file from the **Android database**.

The only thing I like about this option is that if you know the name of the song you want, you can search for it.

- **Playlist:** Displays **ALL** music Playlists from the **Android database**.

I do not see any way to create a new play lists here; therefore you need to create them elsewhere. The problem I had with that option of making the playlist elsewhere and using them, was it pointed to songs on a completely different drive (i.e. my laptop)

- **Directory:** Displays the Android file system

I use this because I keep my patter and songs separate.

I use this option to select my Patter music. Make sure you select that directory to display all your patter.

**\*NOTE: If you use this option, you will have to switch back and forth from your “patter” and your “songs” directory ALL THE TIME.**

Select Item #19 “Cue Music” (the letter “Q”)

This menu looks exactly the same as if you had pressed “Select Music”. I use this option to select my singing call for that tip. (You should set this up at the end of each tip so you do not waste time SEARCHING for the song to do.)

**\*NOTE: If you use this method, you will have to switch back and forth from your "patter" and your "songs" directory ALL THE TIME.**

## Lyrics

There are four way to select lyrics;

**1. Marry Music-Lyrics:**

See Website for description

**2. Lyrics file in the same directory as the music:**

Copy the lyrics files into the same directory as the music files. The lyrics & music files needs to be named **exactly** the same. The extension for the lyrics file can be "htm" or "html".

**IF YOU DO THIS** there may be too many files to load into your phones' main memory. I tried this and SqView locked up and gave me an error. Also, in the search of music, all the "html" files and directories will be displayed too. **NOT GOOD!**

**3. Lyrics Directory:**

Enter the path to your lyrics directory in Options->Lyrics Directory. This path is depending on which phone that you have.

Example: `:///sdcard/My Music/Lyrics`

This is the option that seems to work the best all around. (This is just my humble opinion.)

**4. External Database:**

See Website for description

Again you will need access to the Internet to use this option.

## Select Lyrics:

Select Item 15 "Select Lyrics" (looks like a document)

Select this option to search for any lyrics that are not "married" already or not found when you press it for that song. Any Lyrics found associated with that title will display.

Two key points here, first the song must be selected first, second you must play the music then press this button as the music starts to play. **THIS DOSE NOT AUTOMATICLY DISPLAYS THE CUE SHEET LIKE THE PC VERSION.**

## Looping

Now, just a few comments about looping. There are four buttons involved with this option, #10 thru #13. This, of course, is used for your patter. Make sure that button #11 has a check mark and press button #13, to set the looping time. Button 13 acts like an auto loop function and will loop and loop and loop until you stop the music. This is not noted on the website.

The remaining buttons on the main screen of the Android version do exactly as they say, so see the website on the use of these buttons

(I hope that I have explained the main settings that most of you will be using and how I have set up my copy of the **SqView Android version.**)

## ***A Few Closing Comments***

First, SqView can be run from a flash/thumb drive also, so I keep a backup program, for all my music, lyrics, and choreo on a flash/thumb drive. **PLEASE** note that any play lists you have set for that flash/thumb drive, will differ from laptop to laptop depending on how many USB ports or external devices the laptop has: i.e. SD card slot, etc. I am referencing a caller “**no show**”, heaven forbid, or your laptop crashing and having to use the cuers’ laptop. Your Playlists will not work and will take too long to reset during a dance. Make sure that in your main window/screen of SqView, the three columns are pointed to the flash/thumb drive directories where the music is located.

Second, SqView Android version, none of the playlists that are created on a different computer will **not** work but will be displayed. After a couple emails with Thomas; I am still not sure how to set this feature up.

Third, Thomas Berned is the expert on SqView. He should be the one contacted for any technical problems; I know that I am not the expert on SqView. I have been tasked to present this because I have used SqView for the last 10 years for both classes and dances, and have explored most of the features SqView offers.

Finally, keep exploring both versions of SqView. In SqView for PC, there are a lot more features that have not been explained within this section. I am also sure that there are other callers that have explored many more features than I have. Seek them out. I always ask my fellow callers if they use SqView; if they have explored any of the features, most have not. But, once in a great while, you may find someone that uses something that I have not covered. That’s great; pick their brain about that feature. If **you** find and use something different, pass it along to Ken. I am sure he can use it and add to what I have presented here.





